



KLIMAX LOUDSPEAKERS

OVERVIEW

Linn's highest performing fully integrated multi-channel loudspeaker range

KEY FEATURES INCLUDE

- Linn-designed 3K Driver Array for wider dispersion, precise high frequency response and single-point source accuracy
- Aktiv Servo-Driven Bass system for more accurate bass
- Chakra power amplification fully integrated on Aktiv models, more efficient than traditional Aktiv designs
- Plasma-cut 'armour-grade' steel plate loudspeaker stand for the floor-standing models, provides rock-solid stability
- Standard and high gloss real wood veneer or bespoke colour finishes

Delivering an unprecedented level of clarity and detail, Linn's highest performing fully integrated multi-channel loudspeaker range is the ultimate stereo or surround sound playback solution for music and movies.

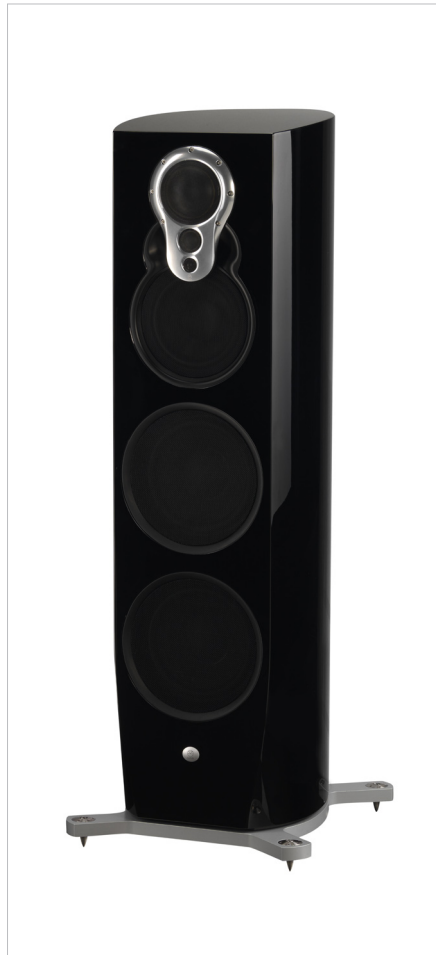
The range comprises three fully integrated Aktiv models with built-in power amplification: 350A Floor-stander; 320A Bookshelf; and 340A Centre Channel. The Aktiv servo Bass-reinforcement loudspeaker (345) completes the range to provide full 5.1 playback. A passive variant of the Floor-stander (350) is also available.

The 3K Driver Array gives outstanding high frequency reproduction and allows greater flexibility when positioning the loudspeakers. The precision machined die-cast array houses the mid-range, high-frequency and super high-frequency drive units for wider dispersion, precise high-frequency response and single point source accuracy, delivering a consistently natural sound.

The Aktiv Servo-Driven Bass System powers the bass drive units. The precise motion of each unit is measured, compared against the original input signal, and immediately corrected to ensure that the output perfectly matches the input, resulting in an extremely accurate and musical bass performance.

All Aktiv models benefit from Linn's 'Silent Power' amplification technology, Chakra, which offers significantly increased power, reliability and efficiency, whilst producing less heat and distortion.

Advanced pressure-formed natural laminate cabinets provide an exceptionally rigid construction with ultra-low resonance properties. High grade real wood veneers are used throughout and are available in special high gloss finishes and bespoke colours to perfectly complement any living space.



1



2



3



4

- 1 Klimax 350 (Piano Black)
- 2 Klimax 320 (High Gloss Rosenut)
- 3 Klimax 350 3K Driver Array (High Gloss White)
- 4 Klimax 5.1 Loudspeakers (Piano Black)

KLIMAX LOUDSPEAKERS

TECHNICAL SPECIFICATIONS

Linn's highest performing fully integrated multi-channel loudspeaker range

	Klimax 350	Klimax 350A	Klimax 340A	Klimax 320A	Klimax 345
Introduced	April 2008	April 2008	April 2008	April 2008	April 2008
Type	6-way floor-standing loudspeaker with Aktiv bass	Fully integrated Aktiv 6-way floor-standing loudspeaker	Fully integrated Aktiv 5-way centre-channel loudspeaker	Fully integrated Aktiv 4-way compact loudspeaker	1-way Aktiv bass reinforcement loudspeaker
Drive units	13 mm (0.5") 25 mm (1") 75 mm (3") domes 165 mm (6.5") upper bass 2 x 200 mm (8") servo lower bass	13 mm (0.5") 25 mm (1") 75 mm (3") domes 165 mm (6.5") upper bass 2 x 200 mm (8") servo lower bass	13 mm (0.5") dome 25 mm (1") dome 75 mm (3") dome 200 mm (8") upper bass 200 mm (8") servo bass	13 mm (0.5") dome 25 mm (1") dome 75 mm (3") dome 165 mm (6.5") bass	300 mm (12") servo bass
Operating volume	50 litres	50 litres	40 litres	20 litres	45 litres
Efficiency	87 dB for 1 watt at 1 m	-	-	-	-
Crossover options	Fully Aktiv (internal lower bass / external upper bass & 3K Array), Aktiv lower bass / passive upper bass & 3K Array	Fully Aktiv (internal modules)	Fully Aktiv (internal modules)	Fully Aktiv (internal modules)	Fully Aktiv
Crossover points	105 Hz, 392 Hz, 3.8 kHz, 10.9 kHz	105 Hz, 392 Hz, 3.8 kHz, 10.9 kHz	105 Hz, 392 Hz, 3.8 kHz, 10.9 kHz	392 Hz, 3.8 kHz, 10.9 kHz	-
Bass roll-on	19 Hz, 40 Hz, 60 Hz	19 Hz, 40 Hz, 60 Hz	19 Hz, 40 Hz, 60 Hz	30 Hz, 60 Hz, 98 Hz	-
Nominal impedance	4 Ω	-	-	-	-
Frequency range	20 Hz - 33 kHz	20 Hz - 33 kHz	30 Hz - 33 kHz	55 Hz - 33 kHz	Adjustable from 10 Hz - 235 Hz in 9 steps
Mains supply frequency	50 - 60 Hz	50 - 60 Hz	50 - 60 Hz	50 - 60 Hz	50 - 60 Hz
Mains input voltage (auto-sensing)	90 - 135 V 180 - 265 V	90 - 135 V 180 - 265 V	90 - 135 V 180 - 265 V	90 - 135 V 180 - 265 V	90 - 135 V 180 - 265 V
Connection options	Up to 4-way by wire or amplifier	-	-	-	-
Magnetic shielding	Yes	Yes	Yes	Yes	Yes
Weight (*excluding stand)	54 kg / 119 lb*	54 kg / 119 lb*	46.5 kg / 102 lb*	20 kg / 43 lb*	27 kg / 60 lb
Dimensions	1130 mm (H) x 312 mm (W) x 430 mm (D)	1130 mm (H) x 312 mm (W) x 430 mm (D)	290mm (H) x 840 mm (W) x 400 mm (D)	473mm (H) x 292mm (W) x 410 mm (D)	420 mm (H) x 491 mm (W) x 410 mm (D)
Standard finishes	Black Ash, Rosenut, Walnut, Cherry, Oak, White	Black Ash, Rosenut, Walnut, Cherry, Oak, White	Black Ash, Rosenut, Cherry, White	Black Ash, Rosenut, Cherry, White	Black Ash, Rosenut, Walnut, Cherry, Oak, White
High gloss finishes	Black Ash, Rosenut, Walnut, Cherry, Oak, White + 208 RAL Classic	Black Ash, Rosenut, Walnut, Cherry, Oak, White	Black Ash, Rosenut, Cherry, White	Black Ash, Rosenut, Cherry, White	Black Ash, Rosenut, Walnut, Cherry, Oak, White
High gloss colours	All 213 RAL Classic Gloss colours are available (except luminous colours: RAL 3026, 3024, 2007, 2005 and 1026).				

Linn Products Limited

Glasgow Road, Waterfoot, Eaglesham, Glasgow G76 0EQ, Scotland, UK.

Telephone: +44 (0) 141 307 7777, Facsimile: +44 (0) 141 644 4262, Helpline: 0500 888909, E-mail: helpline@linn.co.uk, Website: www.linn.co.uk

Linn Records Limited

Glasgow Road, Waterfoot, Eaglesham, Glasgow G76 0EQ, Scotland, UK.

Telephone: +44 (0) 141 303 5027, Facsimile: +44 (0) 141 303 5007, Helpline/Mail order: +44 (0) 141 303 5029, E-mail: records@linn.co.uk,

Website: www.linnrecords.com

Copyright © 2010, Linn Products Limited. All rights reserved.

Linn, the Linn logo and all other Linn product names and slogans are trade marks or registered trade marks of Linn Products Limited, registered in at least the UK and/or the EU. Linn Products Limited disclaims any proprietary interest in trade marks and trade names other than its own.